

Prepared by: Zieske Land Surveying, Inc. Address: Box 94, Windom, MN 56101 Phone: (507) 831-0100

UNITED STATES PUBLIC LAND SURVEY CORNER CERTIFICATE FOR

Land survey monuments situated in Section 1, Township 106 North, Range 43 West, of the Fifth Principal Meridian, Murray County, Minnesota..

Previously recorded in N/A in County Recorder's Office.

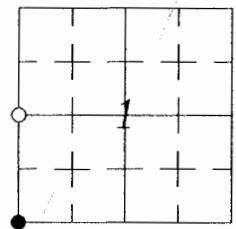
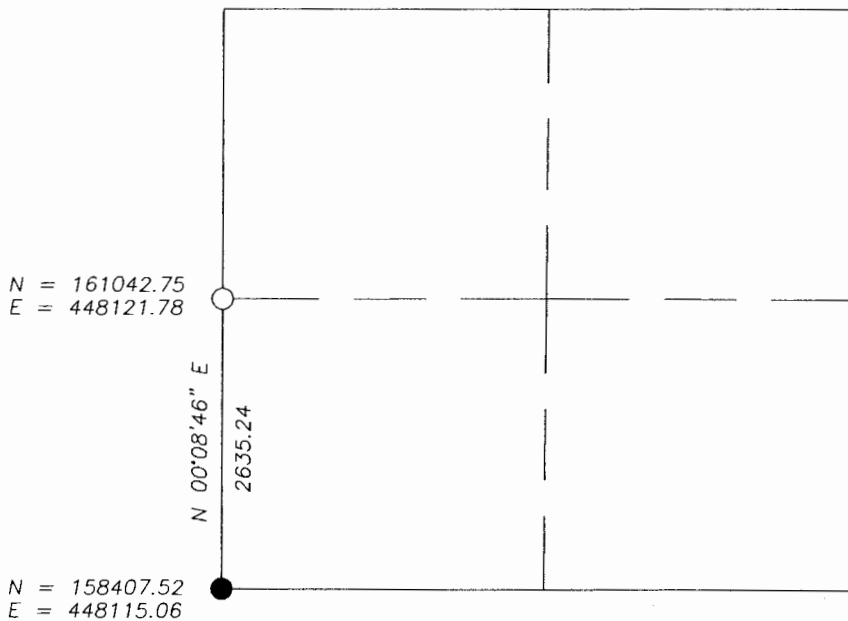
(Show reason for preparing this certificate, the evidence and detailed procedure used in establishing the corner position & monumentation found or placed.)

MONUMENT DESCRIPTION AND REMARKS: On October 3, 2007 dug with backhoe for West 1/4 Corner and found a 6" X 6" concrete monument with a "X" in center 1.7' below grade at Township Road Centerline.

Murray County Highway records indicated no information for corner. Accepted concrete monument as corner and set 1" Iron Pipe with survey cap 23008 over top center of monument. Monument is 3' North of fenceline East and 2' South of fenceline west.

PLAN-VIEW

MURRAY COUNTY COORDINATES NAD 83 (1996)



I hereby certify that this land surveying document was prepared and related survey work was performed by me or under my direct supervision and that I am a duly licensed Land Surveyor under the laws of the State of Minnesota.

Perry L. Zieske 10-8-07
Signature Date
Perry Zieske
License number 23008

Corners to be Indexed

Corners	Section	Township	Range
W 1/4	1	106	43